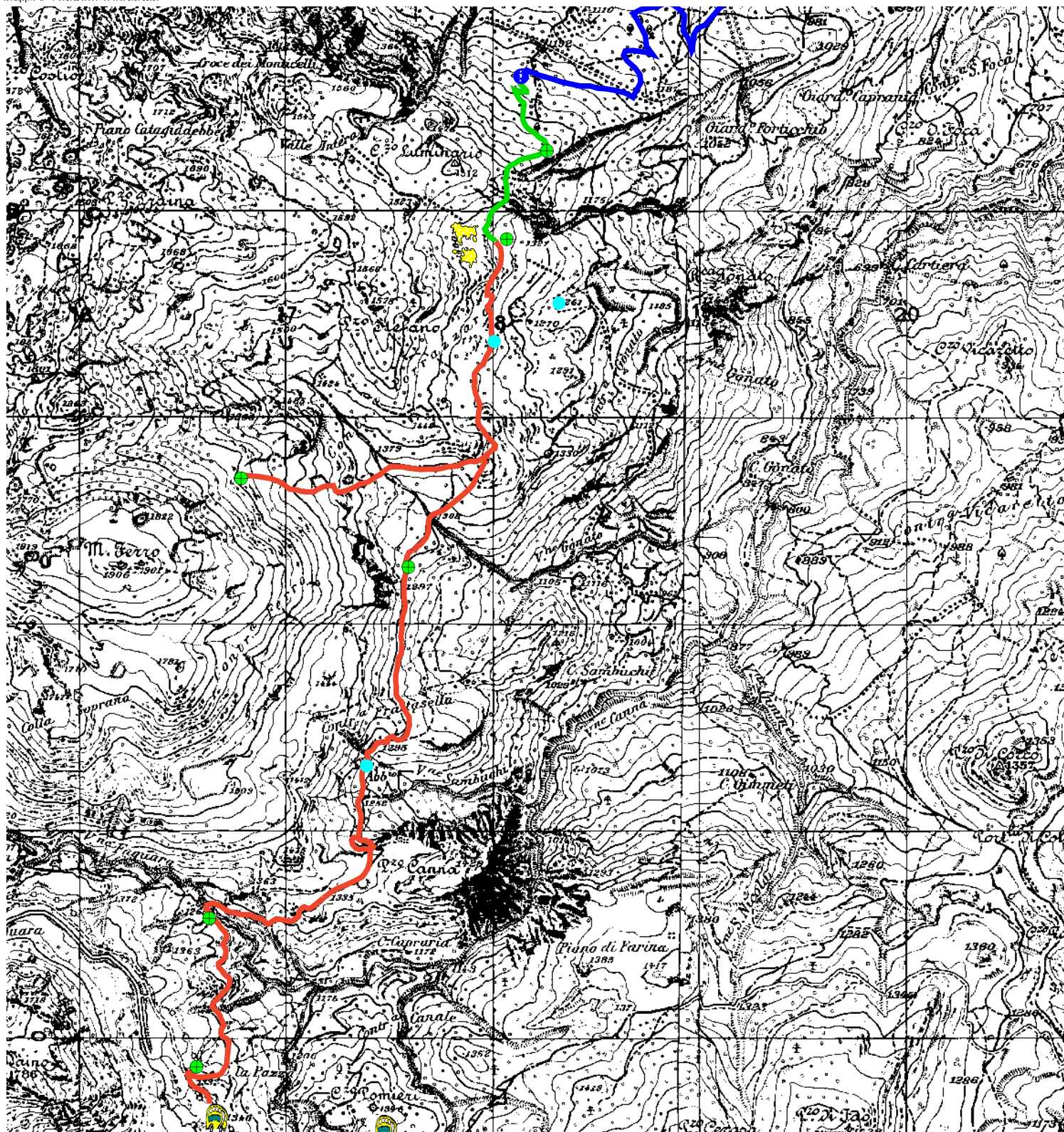










# Sentiero Case La Pazza/Piano Pomo



Tavolette IGM 260 IV SO / 260 IV SE  
(scala 1 : 25.000)

## LEGENDA

-  Punti raduno.shp
-  Strada Sempria Milocca
-  Punto informazione
-  Punto acqua.shp
-  Punto Osservazione
-  La Pazza /Piano Pomo
-  Sentiero Agrifogli
-  Agrifogli Giganti

## CARATTERISTICHE DEL SENTIERO

Difficoltà [T - E - EE] .....	EE
Lunghezza [km] .....	5,95 + 1,3
Dislivello [m] .....	139
Altitudine min [m s.l.m.] .....	1261,00
Altitudine max [m s.l.m.] .....	1355,00
Tempo di percorrenza [hh.mm] .....	03.00

Il periodo ottimale è Primavera/estate/autunno e l'equipaggiamento consigliato scarpe da trekking e giacca a vento

0 1 2 chilometri

